

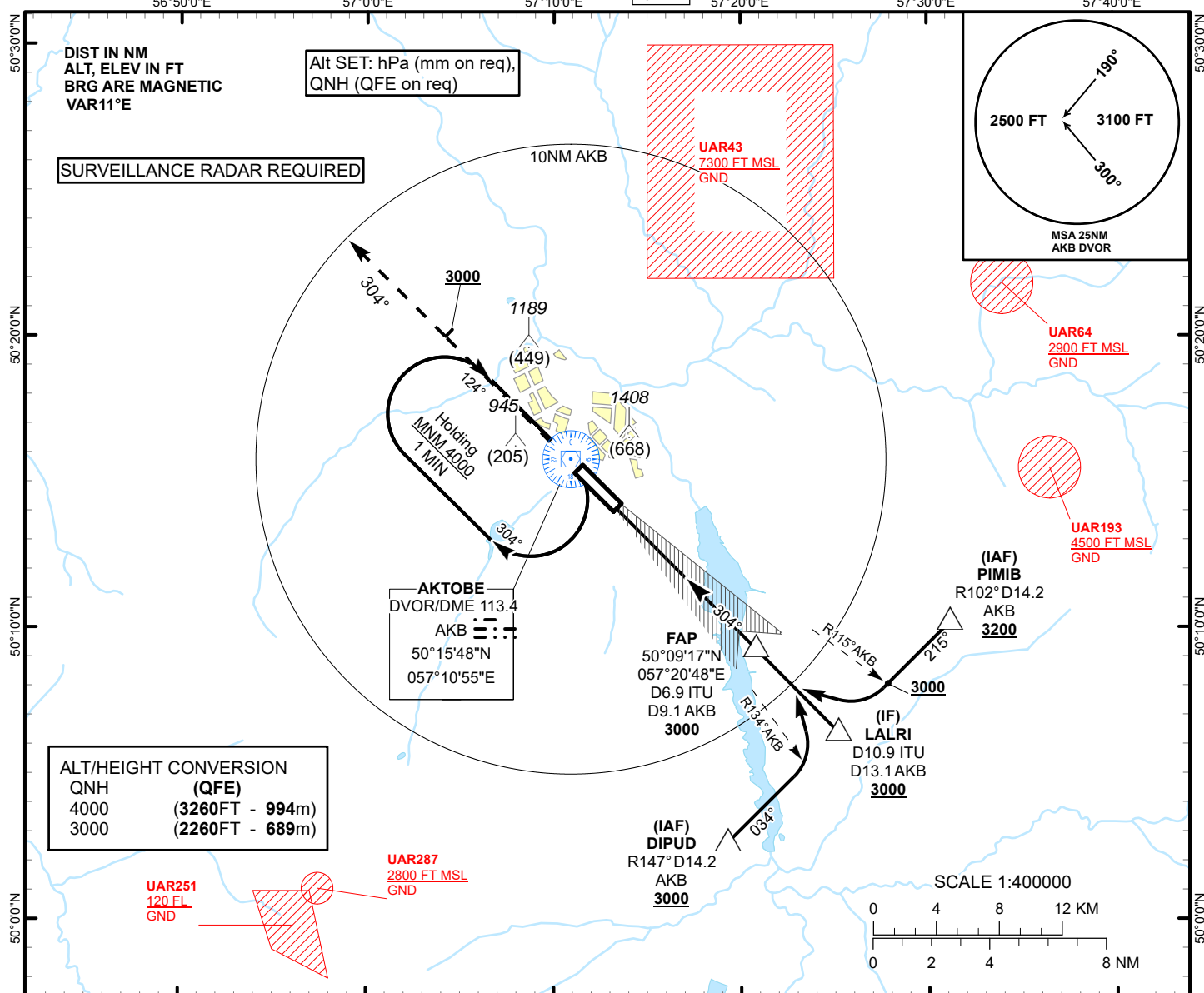
INSTRUMENT
APPROACH
CHART - ICAO

AERODROME ELEV 741 FT
HEIGHTS RELATED TO
THR 30 ELEV 740 FT

ILS
LLZ 110.5
ITU
GP 329.6
CH 42X

AKTOBE TOWER 128.0
AKTOBE ATIS (EN) 126.0
AKTOBE ATIS (RU) 127.80

AKTOBE
ILS/DME
RWY 30



MISSED APPROACH

Climb on track 304° to 3000.
After passing 2000 radar
vectoring will be provided.
RADIO FAILURE:
In case of RCF climb on track
304° to 2000 or above.
Outbound to D5.2 NM AKB,
turn LEFT to AKB. Climb to 4000,
and join to holding pattern.

TRANSITION ALT
10000

DVOR/DME
AKB

ILS RDH 54

ELEV 740
THR RWY 30

FAP
D6.9 ITU
D9.1 AKB
3000

IF
LALRI
D10.9 ITU
D13.1 AKB
3000

GP 3.0°
304°

CHANGE: AKTOBE TOWER FREQ.

| Aircraft Category | | A | B | C | D | THR - DME ITU | 6.9 | 6 | 5 | 4 | 3 | 2 | 1 |
|----------------------------------|-------|----------|----------|----------|----------|---------------|--------|--------|--------|--------|--------|-------|-------|
| Straight-in Approach OCA/H | | | | | | DME AKB | 9.1 | 8.2 | 7.2 | 6.2 | 5.2 | 4.2 | 3.2 |
| | CAT I | 952(213) | 952(213) | 952(213) | 952(213) | ALTITUDE | 3000 | 2700 | 2408 | 2081 | 1757 | 1434 | 1113 |
| | | | | | | HEIGHT | (2260) | (1960) | (1668) | (1341) | (1017) | (694) | (373) |

DME ITU ZERO RANGED TO THR RWY 30

| | | | | | | | | | | | | | |
|---|-------|--|--|--|--|-----------------|--------|-----|-----|-----|-----|-----|-----|
| Aerodrome Operating Minima DH ft x RVR(CMV) | CAT I | | | | | GS | Kt | 80 | 100 | 120 | 140 | 160 | 180 |
| | | | | | | Rate of descent | ft/min | 420 | 530 | 630 | 740 | 840 | 950 |
| | | | | | | | | | | | | | |

AKTOBE (UATT)
ILS/DME RWY30

AERONAUTICAL DATA TABULATION

| ILS approach to RWY30 from AKB DVOR/DME, DIPUD, PIMIB, LALRI | |
|--|----------------------------------|
| Fix/point | Coordinates |
| AKB DVOR/DME | 50° 15' 48.3"N 057° 10' 54.8"E |
| DIPUD R147°, D14.2 AKB (IAF) | 50° 02' 38.2"N 057° 19' 14.0"E |
| PIMIB R102°, D14.2 AKB (IAF) | 50° 10' 13.4"N 057° 31' 10.1"E |
| LALRI D10.9 ITU, D13.1 AKB (IF) | 50° 06' 26.0"N 057° 25' 11.6"E |
| D6.9 ITU, D9.1 AKB (FAP) | 50° 09' 17.1"N 057° 20' 48.2"E |
| THR RWY30 | 50° 14' 09.59"N 057° 13' 16.51"E |
| ITU LLZ | 50° 15' 44.7"N 057° 10' 49.0"E |